



## HYDROCARBON

### CONVAL



#### Clampseal HP Globe Valve

- Globe, check, ball, gate, throttling and tandem blowdown valves
- ½" to 4"
- In-line repairable
- ANSI 900 to 4500 class

### CONVAL



#### Camseal Power Ball Valves

- Metal seated, unibody construction
- Zero leakage
- Top entry pressure seal
- Inline renewable
- ½" to 4"
- ANSI 1500 to 4500 class

### CONVAL/ HILTAP



#### High Pressure/High Temperature Vents and Drains

- Hydrocarbon drains
- Secondary leak containment

### HILTAP



#### RapidLok™ Series Safety Quick Coupling

- Metal to metal seal
- Leakproof operation
- Safe venting of residual pressure
- ¼" to 6"
- Equal to ANSI 900/1500/2500

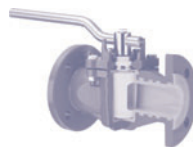
### CERA



#### Ceramic Ball and Sliding Disc Valves, Pipes and Elbows

- For high wear, corrosive and thermal shock applications
- Ceramic seats, balls and liners
- On/off and control applications
- 1" to 8"
- ANSI 150 to 300 class

### AZ-ARMATUREN



#### Plug Valves 2-way and Multi-Port Designs

- DI, SS and special alloys
- Sleeved and lines designs
- Self-lubricating/Maintenance free
- Chemical resistant
- Vacuum proof/Cavity free
- Plug easily adjusted
- T<sub>max</sub>=200°C

### BLAC INC.



#### Electro-Hydraulic Actuators

- Power units and controls
- Linear and rotary applications
- Consultation available
- Field service capability

### EVS Valves



#### Metal Seated Ball Valves

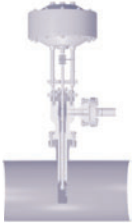
- Tight shutoff
- Fire safe, severe service
- Various materials/end connections
- ½" to 24"
- ANSI 150 to 4500 class



Your trusted supplier of specialty valves and process equipment

## HYDROCARBON

### HORA



Multi-Nozzle Desuperheater

- Venturi nozzles atomize spray water
- Integral pressure control
- Electric and pneumatic actuation
- ANSI 300 to 2500 class

### HORA



Automatic Pump Recirculation Valve

- Minimum flow
- Ensures pump protection
- No pneumatic or electrical connections
- 2" to 10"
- ANSI 150 to 1500 class

### SCHUF/ FETTEROLF



Cam-Set and Stacey Line Blinds

- Positive isolation
- No flange separation
- Buttweld and flanged ends
- Carbon and stainless steel
- 1" to 36"
- ANSI 150 to 1500 class

### SCHUF



Coker IsoPlug Valves

- Materials CS and C12A (to 36")
  - ANSI 150 to 900 class
- Switch Valves
- Materials CS and C12A
  - 3 and 4 outlets at 120 or 90 degrees (to 24")
  - ANSI 150 to 900 class

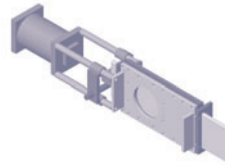
### SCHUF



Sampling Valves

- Metal to metal positive shut-off
- Thermal jacketed optional
- Ram and disc type
- PTFE or graphite packing
- ½" to 96"
- ANSI 150 to 2500 class
- Bottle systems available

### STAINLESS VALVE



Slide Gate Valves

- Tight shut-off in severe applications
- Custom design flexibility
- Slurry applications

### BOEHMER



2 Way and Multiport API Pipeline

- Fully welded 2 and 3 piece body
- District heating, gas isolation and control
- Biogas and natural gas
- Double block and bleed
- ½" to 36"
- ANSI 150 to 2500 class

### PERSTA



High Pressure Valves

- Gate, globe and check
- Forged steel and alloy
- ½" and larger
- ANSI 900 to 4500 class

### Head Office

126 Milner Avenue  
Toronto, ON M1S 3R2  
tel: 416-299-0780

### Western Region

Office/Stocking Warehouse  
6, 2221-41 Avenue NE  
Calgary, AB T2E 6P2  
tel: 403-229-3171

### Field Offices

Atlantic Canada  
Quebec  
Ontario North  
Ontario East  
Alberta North  
Alberta Central/South  
Saskatchewan

### Ext.

131  
132  
133  
134  
131  
110  
114



[www.armourvalve.com](http://www.armourvalve.com)  
sales@armourvalve.com  
1-800-268-3508  
fax: 416-299-0394